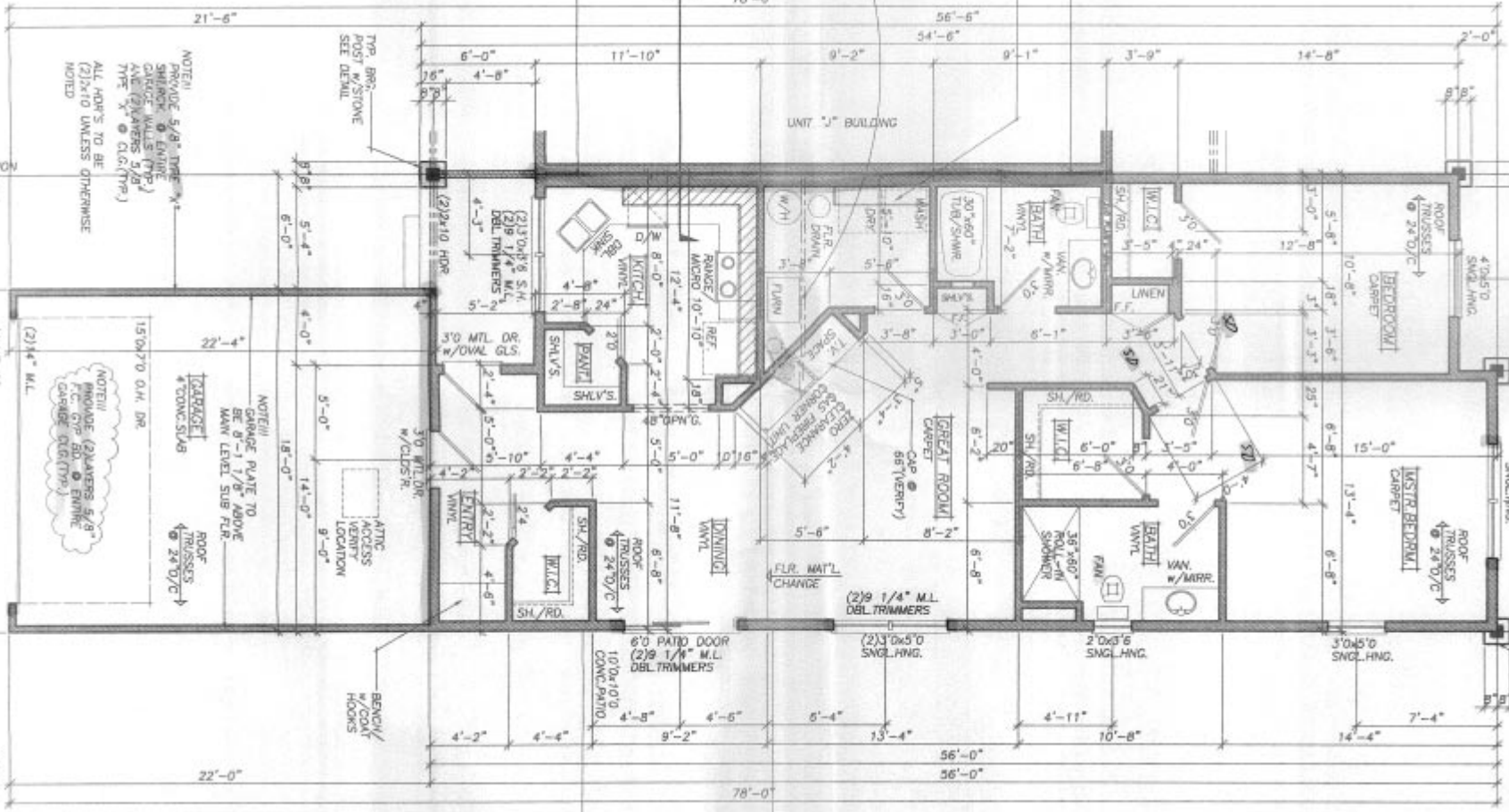


NON-BRG. COAL DEPO. COLMARS MATHY BRG. CO. (TRP.)

UNIT "J" BUILDING



NOTE II  
 PROVIDE 5/8" TYPE "X"  
 SHAPED ANGLE  
 GASKET UNDER (TRP.)  
 ALL JOINTS 5/8"  
 TYPE "X" @ CLC (TRP.)  
 ALL HDRS TO BE  
 (2)X10 UNLESS OTHERWISE  
 NOTED

NOTE III  
 PROVIDE (2) JOIST 5/8"  
 F.C. GIR. BD. @ ENTIRE  
 CARPENT. (CLC) (TRP.)

NOTE III  
 PREST. CONCRETE

TOP BRG.  
 POST W/STONE  
 SEE DETAIL

NOTE III  
 CHANGE PLATE TO  
 BE 8-1 1/8 ABOVE  
 MAIN LEVEL SUB FLR.

BENCH/  
 W/COAT  
 HOOKS

FUR. MAT'L  
 CHANGE

15'0"x7'0" O.H. DR.  
 (2) 1/4" M.L.

ROOF  
 TRUSSES  
 @ 24" O/C

22'-0"

ATTC  
 ACCESS  
 ENTRY  
 LOCATION

22'-0"

6'0" PATIO DOOR  
 (2) 9 1/4" M.L.  
 DBL TRIMMERS

10'0"x10'0"  
 CONCR. PATIO

9'-2"

(2) 9 1/4" M.L.  
 DBL TRIMMERS

(2) 3'0"x5'0"  
 SNGL. HNG.

13'-4"

2'0"x6'6"  
 SNGL. HNG.

10'-8"

3'0"x5'0"  
 SNGL. HNG.

14'-4"

7'-4"

24'-0"